

Anti-IL7Ra hlgG1 Antibody(4A10)

Product Information

GM-52274AB-10	10 µg
GM-52274AB-100	100 µg
GM-52274AB-1000	1 mg

Antibody Information

Species Reactivity	Human
Clone	4A10
Source/Isotype	Monoclonal Human IgG1, κ
Application	Flow cytometry
Specificity	Detects IL7Ra.
Gene	IL7Ra
Other Names	IL7R;ILRA;CD127;IL7RA;CDW127;IMD104;sIL-7R;Inc-IL7R;IL7Ralpha; IL-7Ralpha; IL-7R-alpha
Gene ID	3575
Background	The interleukin-7 receptor is a protein found on the surface of cells. It is made up of two different smaller protein chains-i.e. it is a heterodimer, and consists of two subunits, interleukin-7 receptor-α (CD127) and common-γ chain receptor (CD132). The common-γ chain receptors is shared with various cytokines, including interleukin-2, -4, -9, and -15. Interleukin-7 receptor is expressed on various cell types, including naive and memory T cells and many others.
Storage	Store at 2-8°C short term (1-2 weeks).Store at ≤ -20°C long term. Avoid repeated freeze-thaw.
Formulation	Phosphate-buffered solution, pH 7.2.
Endotoxin	< 1 EU/mg, determined by LAL gel clotting assay

Data Examples

Flow cytometry

The recommended usage range is 0.5-4 μg per test. H_IL-7 Reporter Cell Line (Catalog # GM-C30922) was stained with Anti-IL7Ra hIgG1 Antibody(4A10) (Catalog # GM-52274AB) or isotype control antibody, followed by anti-Human IgG APC-conjugated Secondary Antibody..

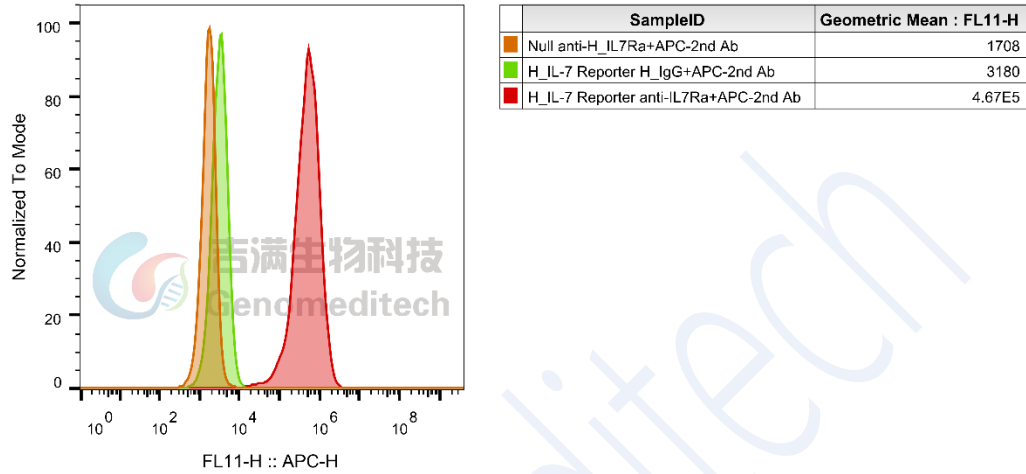


Fig. FACS